



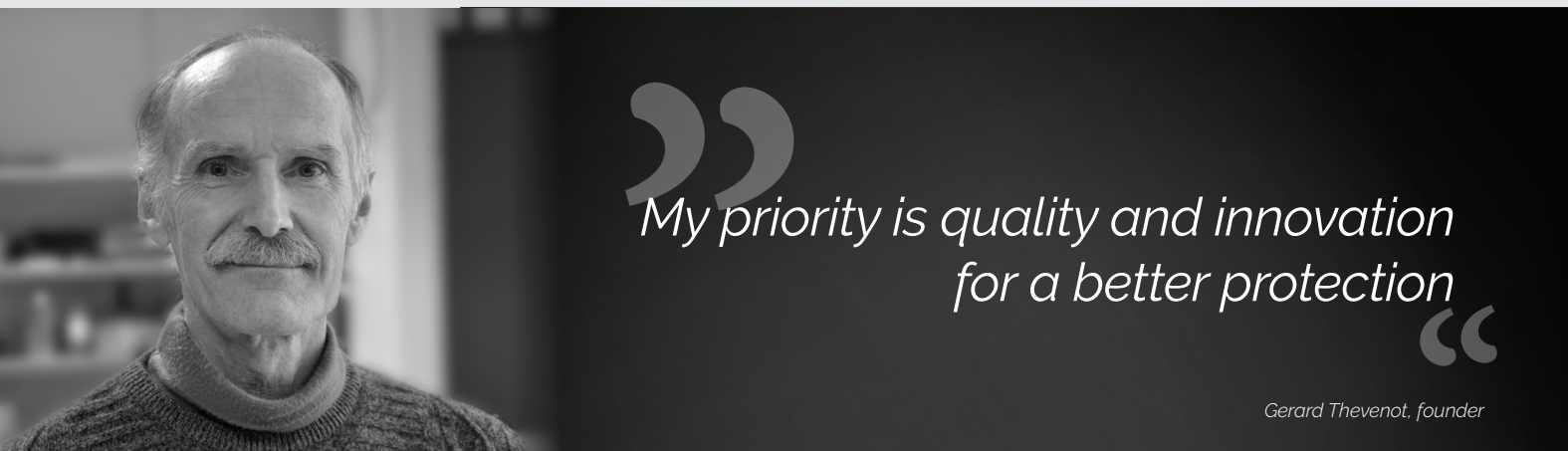
WE PROTECT YOU



COLLECTION
2019 | 2020
WINTER | SUMMER

www.helite.com

15 YEARS OF EXPERIENCE IN PROTECTING PEOPLE



HELITE is a French company founded in 2002 by Gérard Thevenot, one of the French pioneers and entrepreneurs in the light aircraft industry. His passion for inventions and his awareness for safety have pushed him to create Helite. Starting as a company for safety items in the light aircraft sector, the company rapidly understood the crucial need for more safety in all types of applications. Our airbags are already in use in several high-risk sectors such as motorcycle, horse-riding and bicycle.

MORE THAN **120.000 AIRBAGS**

AROUND THE **WORLD**

COLLECTION
2019 WINTER | 2020 SUMMER



AIRNEST
Child S -> XL-L
NOK 5490,-

p.08



TURTLE BLACK NOK 6490,-
TURTLE BLACK EL. NOK 7690,-
FORK Sensor (optional) NOK 1490,-

XS -> XL-L

p.10



TURTLE HI-VIS NOK 6890,-
TURTLE HI-VIS EL. NOK 7990,-
FORK Sensor (optional) NOK 1490,-

XS -> XL-L

p.12



GP AIR NOK 7590,-
GP AIR EL. NOK 8990,-

S -> XL-L

350,- NOK(par)

p.14



VENTED
S -> 4XL
NOK 7590,-

p.16



VENTED Hi-Vis
S -> 4XL
NOK 7590,-

p.18



TOURING GREY
S -> 4XL
NOK 7990,-

p.22



TOURING BLACK
S -> 6XL
NOK 7990,-

p.24



CUSTOM
S -> 6XL
NOK 7590,-

p.26



XENA
S -> XL
NOK 8890,-

p.28



ROADSTER BLACK
S -> 6XL
NOK 8890,-

p.30



ROADSTER VINTAGE
S -> 6XL
NOK 8890,-

p.32



LANYARD
NOK 340,-

p.34



CLIP HANGER
NOK 100,-



CO2 PYRO CARTRIDGE 60 and 100CC for Electronic
NOK 550,-



CO2 CARTRIDGE 50, 60 and 100CC
NOK 269,-

YOUR **BEST** AIRBAG **PROTECTION**



BIG PROTECTION VOLUME

17L normal size
28L large size



REUSABLE

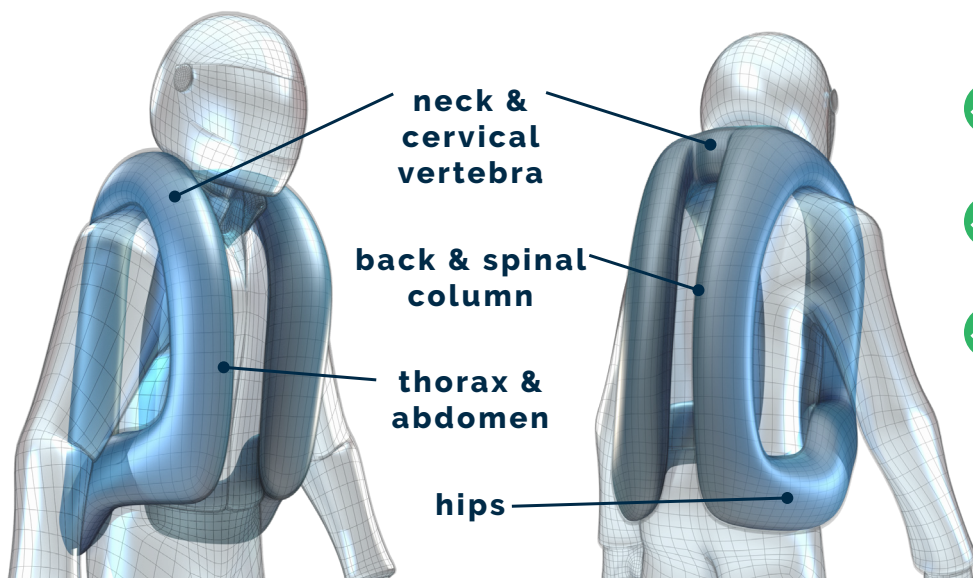
the system can be reactivated in 2 minutes by yourself, you only need to change the cartridge



PROTECTION FROM 0 KM/H

for all types of impacts

PROTECTION OF VITAL PARTS



- ✓ **PREVENTS WHIPLASH**
- ✓ **AVOIDS HYPER-EXTENSION**
- ✓ **PROTECTS AGAINST IMPACTS**

RELIABLE AND WITHOUT OPERATIONAL CONSTRAINTS
(NO BATTERY, NO UNEXPECTED AIRBAG ACTIVATION)

MECHANICAL AIRBAG SYSTEMS

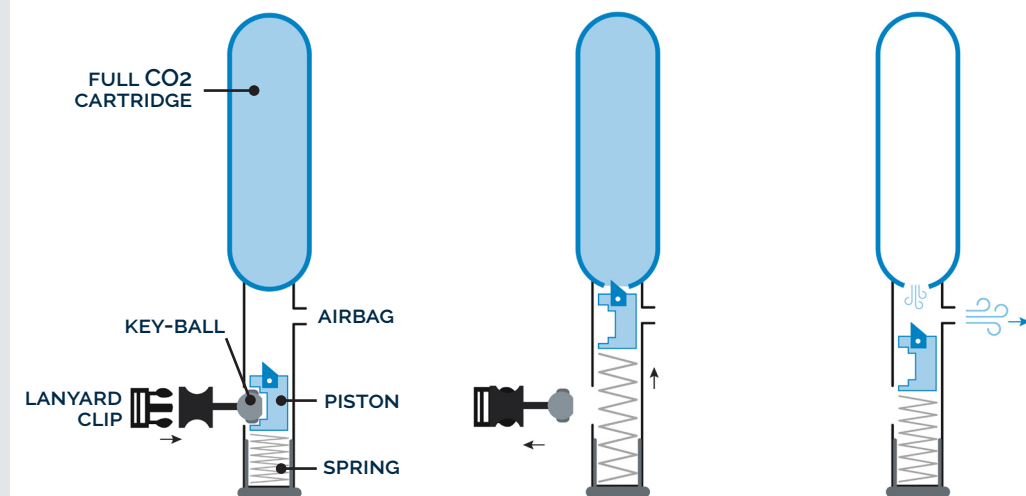


Our mechanical airbag system is for you, if you are looking for reliability and ease of use (no battery, no unexpected airbag activation). You just have to connect your airbag vest with your motorcycle each time you ride. It's like a seatbelt in a car! In the event of a fall or an accident, a CO₂ cartridge deploys the airbag within 100 ms which is faster than the blink of an eye.

SCHEMA OF THE MECHANICAL AIRBAG SYSTEM:

LANYARD

It connects your airbag to the motorcycle. It's easy to install, you don't need special tools or technical knowledge to install the lanyard on the motorcycle. If you use several motorcycles, you can buy the motorcycle lanyards separately.



DAILY RIDE
connect your lanyard to your airbag vest

FALL OR ACCIDENT
the rider is ejected from his motorcycle

AIRBAG INFLATED
the gas deploys the airbag (cartridge empty)





OUR WIRELESS TECHNOLOGY

NO SUBSCRIPTION

SMART
REUSABLE
FAST

FULL DETECTION
BIG AIRBAG VOLUME
OPTIMAL PROTECTION

NEW - SPRING 2020

Available for Turtle 2, GP Air



ELECTRONIC **AIRBAG** SYSTEM

A REVOLUTION IN DETECTION

A CONCENTRATION OF TECHNOLOGIES

HOW IT WORKS



FORK SENSOR

ON THE MOTORCYCLE

FASTEST DETECTION EVER

- DETECTS IMPACTS **EVEN FROM 0 KM/H**
- **EASY TO INSTALL** ON YOUR MOTORCYCLE
- **5 YEARS AUTONOMY** WITHOUT RECHARGE
- **NO GPS SIGNAL** NEEDED

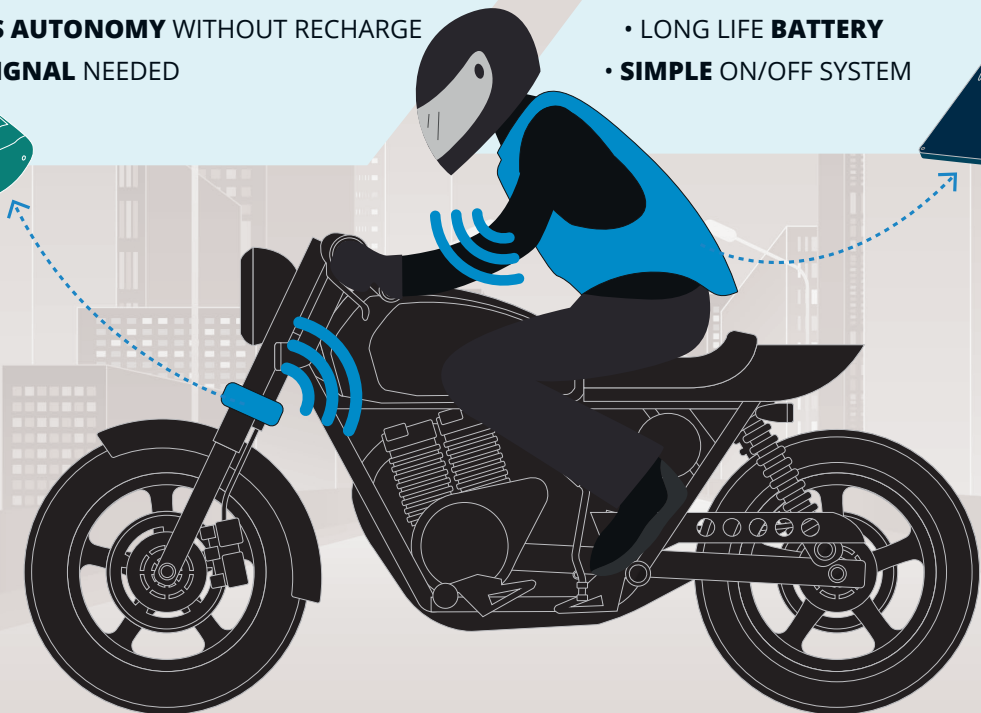


VEST SENSOR

WIRELESS AIRBAG SYSTEM

WEAR, START AND RIDE

- **MOTION ANALYSIS** OF THE RIDER
- DETECTS **ACCIDENTS AND FALLS**
- LONG LIFE **BATTERY**
- **SIMPLE ON/OFF SYSTEM**



ALL TYPES OF
IMPACTS & FALLS



EASY TO USE
ON/OFF SYSTEM



THE FASTEST &
BEST DETECTION



AIRNEST

The first airbag produced by Helite, color your ride with a good protection.



Black color is always on stock. The other colors are available on request, up to 10 weeks delivery time.

- Bordeaux
- Red
- Brown
- Light Green
- Dark Green
- Yellow Hi-Vis + reflective panel

 Dark Grey Navy Blue Royal Blue Light Blue Purple Orange

♂♀ For women and men

AIRNEST (cm)	Child S	Child M	Child L	S	M	L	XL	L-L	XL-L
Height	135-145	140-155	145-165	155-170	165-175	170-185	180-195	170-185	180-195
Chest line with clothes	60-85	70-90	80-95	85-95	90-100	95-105	100-110	100-120	105-140
Waist line with clothes	60-70	65-75	70-80	75-85	80-90	85-100	95-110	90-120	105-135
Hip line with clothes	70-80	75-85	80-90	85-95	90-100	95-105	105-110	100-115	110-140
Back length	30-40	35-45	40-50	45-55	50-60	55-65	60-70	55-70	60-75
Cartridge	50 CC	50 CC	60 CC	60 CC	60 CC	60 CC	60 CC	100 CC	100 CC

This size chart is for information only. Caution, you mustn't wear Helite airbag if you weigh less than 35kg.

- KNOX CE approved back protector.
- The collar unfolds when the airbag deploys to maintain the neck and head effectively.
- Interior textile 3D mesh for maximum air circulation.
- Adjustment straps to fit the vest nicely over any motorcycle gear.
- Resistant fastening clips to sustain many inflations. Easy to open and close even with gloves.



Available
Spring 2020



TURTLE 2 BLACK

A discrete and strong
protection to wear over
any motorcycle jacket.



Airbag inflated, neck protected



♀♂ For women and men



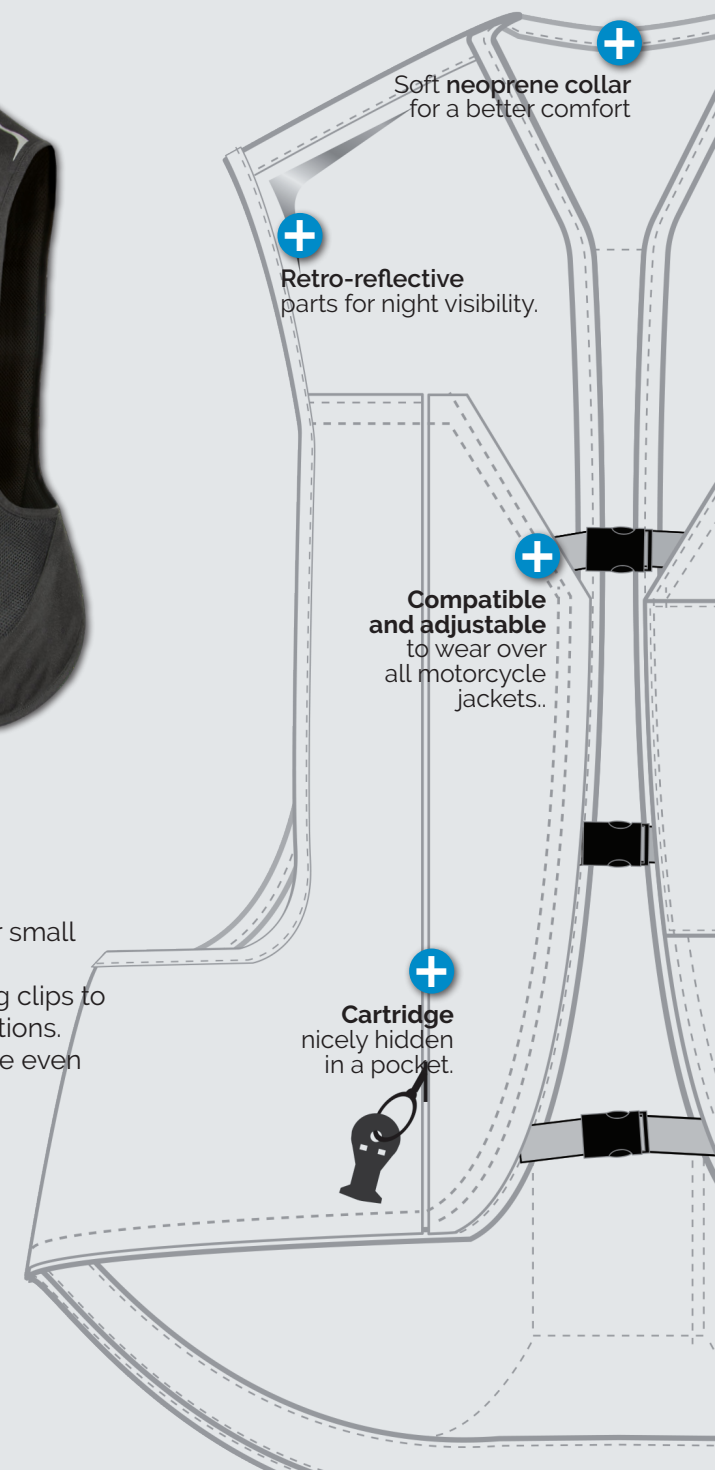
Size XS -> XL-L
Size chart p.13

- TURTLE Technology with SAS-TEC level 2 back protector.
- Soft neoprene collar for a better comfort.
- Interior textile 3D mesh for maximum air circulation.

- Exterior pocket for small objects.
- Resistant fastening clips to sustain many inflations. Easy to open/close even with gloves.

Black color is always on stock. The other colors are available on request, up to 10 weeks delivery time.

- | | | |
|------------|--------------|---------------|
| ● Bordeaux | ● Dark Grey | ● Light Green |
| ● Red | ● Navy Blue | ● Dark Green |
| ● Brown | ● Royal Blue | ● Orange |
| ● Purple | ● Light Blue | |





 **ELECTRONIC
AIRBAG
SYSTEM**
Available
Spring 2020

The TURTLE 2 in hi-vis merges optimal protection and a highly visible design. This color in combination with retro-reflective stripes makes the rider as visible as possible on the road. Accident prevention, that's where the focus is on. The CO2 cartridge is nicely hidden in a (velcro) pocket. Thanks to generous adjustment straps the Turtle nicely fits over any motorcycle jacket and guarantees a high comfort.



TURTLE HIVIS

An optimal accident prevention that maximizes the protection



♀♂ For women and men

TURTLE 2 (cm)	XS	S	M	L	XL	L-L	XL-L
Height	145-165	155-170	165-175	170-185	180-195	170-185	180-195
Chest line with clothes	60-85	80-95	85-100	90-105	95-110	100-115	105-130
Waist line with clothes	60-75	70-80	75-85	80-90	85-95	90-115	100-125
Hip line with clothes	65-80	80-95	85-100	90-105	95-110	100-115	105-130
Back length	30-45	45-55	50-60	55-65	60-70	55-70	60-75
Cartridge	60 CC	60 CC	60 CC	60 CC	60 CC	100 CC	100 CC

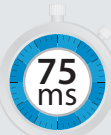
This size chart is for information only. Caution, you mustn't wear Helite airbag if you weigh less than 35kg.

GP AIR

The airbag racing vest has been specially developed for the race track. Attention has been focused on aerodynamics with a perfect fit and a space for the suit's hump. For more security, the vest is made with abrasion resistant materials.



Front and back body armors for a double TURTLE effect.



Fast inflation time

- Big protection volume: 18l
- Very strong abrasion resistance with leather (cow hide 1,2 mm)
- Velcro system to close and open your GP AIR. Easy opening even with gloves.
- You can customize your vest with a quick access to the front and back. Another possibility, the German store *Rabatz Racing* produces customized leather patches.



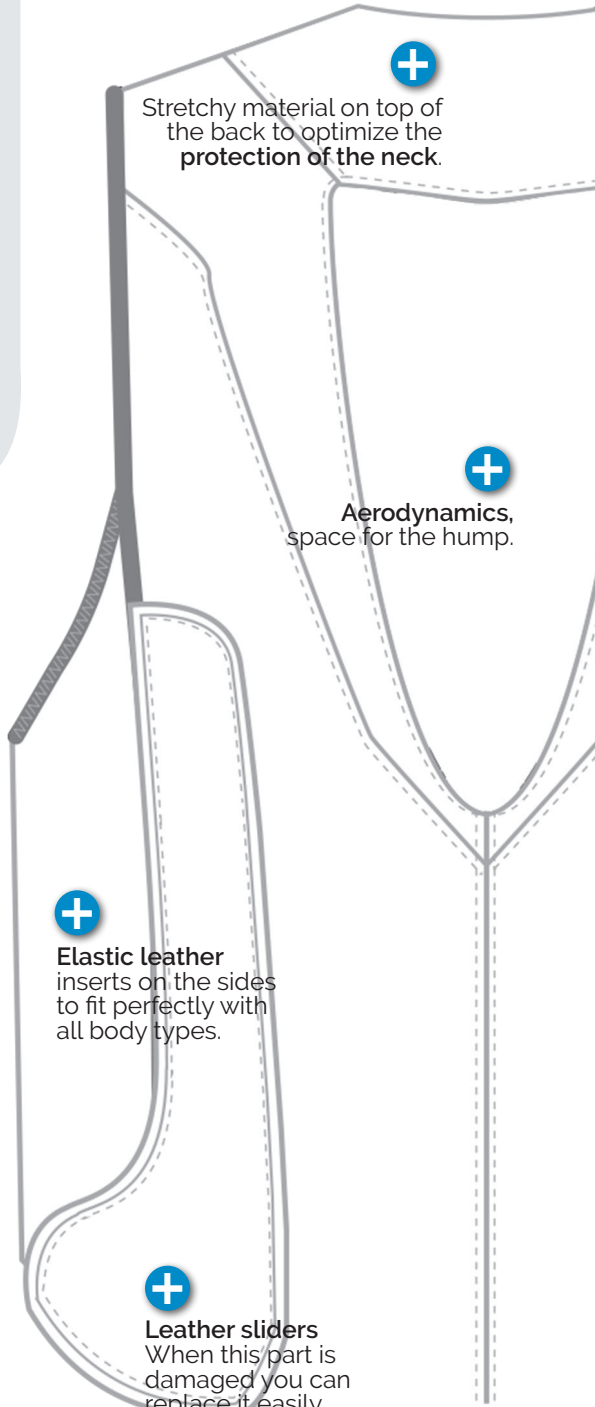
Available Spring 2020



♀♂ For women and men

GP AIR (cm)	S	M	L	L-L	XL	XL-L
Height	160-180	165-185	170-190	170-190	175-195	175-195
Chest line with equipment	75-85	80-90	85-95	90-100	90-105	95-115
Waist line with equipment	65-80	70-85	75-90	80-95	80-100	85-110
Hip line with equipment	70-90	80-95	85-100	90-105	90-110	95-115
Back length	45-60	50-65	55-70	55-70	60-75	60-75
Cartridge	60 CC	60 CC	60 CC	60CC	60 CC	60 CC

This size chart is for information only. The vest should have a close-fitting for the aerodynamics and it must go down 10 cm under the iliac crest (hip bone). Caution, you must not wear Helite airbag if you weigh less than 35 kg.



Stretchy material on top of the back to optimize the protection of the neck.

Aerodynamics, space for the hump.

Elastic leather inserts on the sides to fit perfectly with all body types.

Leather sliders When this part is damaged you can replace it easily thanks to the velcro.



VENTED

Keep cool without missing your optimal protection

- High ventilated textile with mesh.
- TURTLE Technology with SAS-TEC level 2 back protector
- Elbow and shoulder protectors with black leather reinforcement
- Retro-reflective panels for 360°C night visibility
- Removable thermal, waterproof and windproof liner
- Adjustable cuffs



♀♂ For women and men



VENTED (cm)	S	M	L	XL	2XL	3XL	4XL
Height	155-175	160-180	165-185	170-190	175-195	180-200	180-205
Chest line with clothes	75-95	80-100	85-105	90-110	95-115	100-120	105-125
Waist line with clothes	70-90	75-95	80-100	85-105	90-110	95-115	100-120
Hip line with clothes	80-100	85-105	90-110	95-115	100-120	105-125	110-130
Back length	40-60	45-65	50-70	55-75	60-80	65-85	70-90
Arm length	50-60	52-63	55-65	57-68	60-70	62-73	65-75
Cartridge	60 CC	60 CC	60 CC	60 CC	60 CC	60 CC	60 CC

This size chart is for information only. Caution, you mustn't wear Helite airbag if you weigh less than 35kg.



VENTED HI-VIS

*Your airbag companion
for the hot days with
high visibility*



♀♂ For women and men

Size S -> 4XL
Size chart p.17



You are looking for a dynamic, sportive design for riding under hot temperatures, but do not want to give up your airbag protection? The Vented hi-vis is your model! While generous mesh inserts ensure an optimal ventilation, an integrated SAS-TEC back protector offers a maximum protection. For changing weather the jacket is provided with a removable liner that is waterproof and windproof. The neon color adds makes the rider more visible.



A revolution for your safety

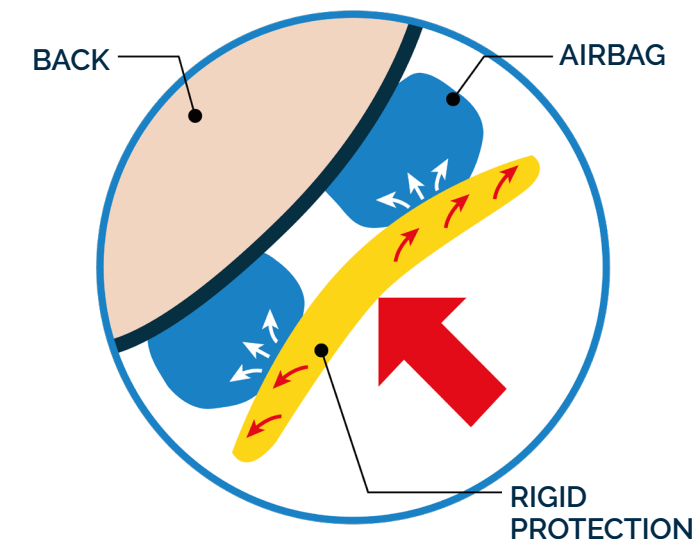
OPTIMAL BACK PROTECTION

A high-quality back protector (SAS-TEC level 2) is placed over the airbag as a rigid outer material like a turtle shell so that the whole back is protected in case of a fall. The composition of the TURTLE airbags can be compared with the composition of a helmet: there is a rigid outer material (protector) and a softer inner material (airbag) that absorbs the shock. Due to the extensive protector the back is now completely covered.

DISTRIBUTION OF IMPACT FORCES

ENERGY ABSORPTION 10 X MORE EFFECTIVE THAN A NORMAL AIRBAG

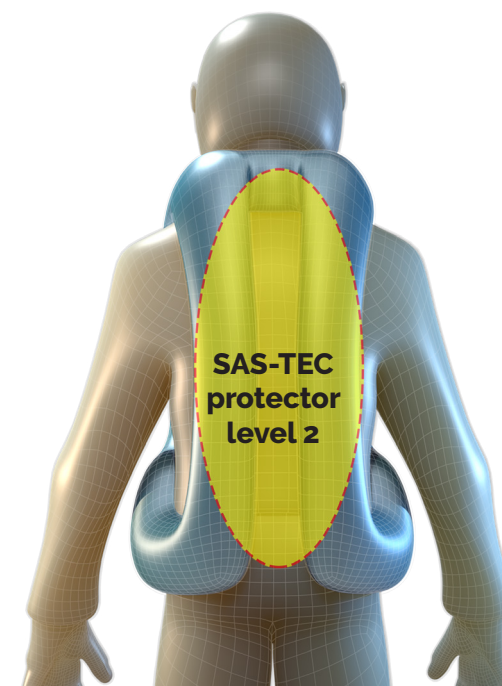
The smaller the surface on which the forces act, the better is the protection of the TURTLE comparable with a standard airbag. Tests from the external laboratory CRITT Sport have shown that in case of an impact with an object with a diameter of 13 cm (rear-view mirror, post, etc.) the force distribution is 10 times more effective than with a standard airbag.



PROTECTION AGAINST INTRUDING OBJECTS

MULTIPLICATION OF PROTECTION AREA

The rigid back protector not only ensures a better force distribution but also prevents the airbag from being damaged. The big TURTLE advantage is that it protects the rider from intruding objects like a guard railing, a brunch or a piece of a motorcycle. The covered area is multiplied.





TOURING GREY

An airbag jacket for all year round. By controlling the air circulation the pilot can easily adapt to the riding season.

♀♂ For women and men

- TURTLE Technology with SAS-TEC level 2 back protector.
- Retro-reflective panels for 360°C night visibility.
- Higher quality fabric and finishes adapted to touring motorcycling: 600D and 1000D (on elbows and shoulders).



Waterproof, windproof and breathable membrane for any weather condition.

- Removable fully-sleeved thermal liner (100% Polyester) with mesh.
- Zippers on front, back and generous two-way zippers on the sleeve cuffs offer added ventilation.



airbag inflated



TOURING Black (cm)	S	M	L	XL	2XL	3XL	4XL	5XL*	6XL*
Height	160-175	170-180	175-185	180-190	180-195	180-200	180-205	180-205	180-210
Chest line with clothes	70-85	80-90	85-95	90-100	95-105	100-110	105-115	110-125	115-135
Waist line with clothes	65-80	70-85	75-90	80-95	85-100	90-105	95-110	100-120	105-130
Hip line with clothes	70-85	80-95	85-100	90-105	95-110	100-115	105-120	110-125	115-135
Back length	55-70	60-75	65-80	65-85	65-90	70-95	70-100	70-100	70-100
Arm length	57-65	62-70	65-72	65-75	65-77	65-80	67-82	67-85	67-90
Cartridge	60 CC	60 CC	60 CC	60 CC	60 CC	60 CC	60 CC	100 CC	100 CC

* 5XL and 6XL size only available in black color. This size chart is for information only. Caution, you mustn't wear Helite airbag if you weigh less than 35kg.

TOURING BLACK

An airbag jacket for multi-season motorcycle riding. The TURTLE technology and the retro-reflective panels ensure an optimal protection.



Retro-reflective panels

Adjustable slider for neck

Zipper on front, back and sleeve cuffs for ventilation

Many interior and exterior pockets of all sizes

SAS-TEC back protector level 2

Higher quality fabric 1000D on elbows and shoulders



Waterproof, windproof and breathable membrane for any weather conditions

Removable fully-sleeved thermal liner (100% Polyester) with mesh

♀♂ For women and men

Size S -> 6XL
Size chart p.23



CUSTOM

Keep your style,
boost your safety



Our custom vest is made for you! By stitching your patches you can even give the vest your own individual look! Custom guarantees a full freedom of movement and a maximum of comfort. For an optimal protection it integrates the TURTLE Technology. You don't have to make anymore compromises.



♀♂ For women and men

- Stretchy fabric on top of the back to optimize the protection of the neck (nicely hidden by a velcro).
- Black leather (cow hide 1,2 mm)
- Zipper access at the back and left side to stitch easily your patches.
- Very low cut underarm for full freedom of movement and to wear over other clothes or motorcycle equipments.
- Stretchy leather on sides ensure a fitted cut and a high comfort.



CUSTOM (cm)	S	M	L	XL	2XL	3XL	4XL	5XL	6XL
Height	155-185	160-190	165-195	170-195	175-195	175-195	175-195	175-200	180-205
Chest line with clothes	80-100	85-105	90-110	95-115	100-115	105-120	110-125	115-130	120-135
Waist line with clothes	70-95	75-100	80-105	85-110	90-115	95-120	100-125	105-130	110-135
Hip line with clothes	80-100	85-105	90-110	95-115	100-120	105-125	110-130	115-135	120-140
Back length	45-65	50-70	55-72	60-75	60-75	60-75	60-75	60-80	60-80
Cartridge	60 CC	60 CC	60 CC	60 CC	60 CC	60 CC or 100 CC *	60 CC or 100 CC *	100 CC	100 CC

* Caution, when you change your cartridge please check its size thanks to the label on your airbag Custom vest. This size chart is for information only. Caution, you must not wear Helite airbag if you weigh less than 35 kg.



XENA

Xena appeals to all women who want to combine style and safety on motorcycle.

This timeless airbag jacket can be worn by every women thanks to its stretchy leather and guarantees a maximum of comfort.



Cartridge hidden in a pocket

Stretchy and breathable fabric under the arms

Fitted cut and a high comfort with stretchy leather

Stretchy fabric to optimize the protection of the neck

♀ For women
Black leather (cow hide 1,2 mm)
Removable thermal liner to ride all year.

SAS-TEC back protector level 2

Hip size adjustable with velcro

XENA (cm)	S	M	L	XL
Height	165-180	170-185	175-190	180-195
Chest line with clothes	85-95	90-100	95-105	100-110
Waist line with clothes	75-90	85-100	90-105	95-110
Hip line with clothes	85-100	90-105	95-110	100-115
Back length	60-70	60-75	65-80	65-85
Arm length	57-63	58-65	59-67	60-69
Cartridge	60 CC	60 CC	60 CC	60 CC

This size chart is for information only. Caution, you mustn't wear Helite airbag if you weigh less than 35kg.

ROADSTER BLACK

Invisible airbag to keep your safety with style. The jacket made of high quality black leather is provided with breathable and stretchy zones under the arms that ensure a good ventilation and a freedom of movement. Thanks to its removable thermal liner the airbag jacket can even be worn in lower temperatures. For an optimal protection it integrates the TURTLE Technology and shoulder/elbow armors.



Black leather (cow hide 1,2 mm) | ♂ For men | Soft neoprene collar
Stretchy fabric on top of the back to optimize the protection of the neck
Fitted cut and a high comfort | Exterior and interior (smartphone) pockets

ROADSTER (cm)	S	M	L	XL	2XL	3XL	4XL	5XL	6XL
Height	160-175	170-180	175-185	180-190	180-195	180-200	180-205	180-210	180-215
Chest line with clothes	75-90	85-95	90-105	100-110	105-115	110-120	115-130	120-140	130-150
Waist line with clothes	70-80	75-90	85-100	90-105	95-110	100-120	105-130	110-135	120-140
Hip line with clothes	75-90	85-100	95-110	100-115	105-120	110-125	115-135	115-140	115-150
Back length	55-70	60-75	65-80	65-85	65-90	70-95	70-100	70-100	70-100
Arm length	57-65	62-70	65-72	65-75	65-77	65-80	67-82	67-85	67-90
Cartridge	60 CC	60 CC	60 CC	60 CC	60 CC	60 CC or 100 CC *	60 CC or 100 CC *	100 CC	100 CC

* Caution, when you change your cartridge please check its size thanks to the label on your airbag jacket. This size chart is for information only. Caution, you must not wear Helite airbag if you weigh less than 35 kg.

ROADSTER VINTAGE



- SAS-TEC level 2 back protector + shoulder/elbow armors.
- Stretchy fabric on top of the back to optimize the protection of the neck (nicely hidden by a velcro).
- Brown leather (buffalo 1,3 mm).
- Stretchy leather on sides ensure a fitted cut and a high comfort.
- Soft neoprene collar
- Stretchy and breathable fabric under the arms for a great mobility.
- Removable thermal liner.

A retro style and a maximum safety - these both components won't leave your side.

Size S -> 6XL
Size chart p.31

♂ For men



ACCESSORIES

A simple click and a CO2 cartridge - that's all it needs to be protected!

LANYARD

If you use several motorcycles, you can buy the motorcycle lanyards separately. No special tools or technical knowledge are required to install the lanyard on the motorcycle.



CLIP HANGER

The clip hanger allows you to attach your lanyard when you are not using your motorcycle.



CARTRIDGE

In the event of a fall, replace the empty cartridge with a new one of the same capacity of the Helite brand. Quick and easy, you can re-use your airbag system in less than 2 min.



CO2 Cartridge	Weight	Protection volume
50 CC	152 g	14 liters
60 CC	182 g	17 liters
100 CC	300 g	28 liters

OTHER HELITE APPLICATIONS



HORSE RIDERS



CYCLISTS

HELITE
airbag technology expert



SENIORS

Discover our protection
www.helite.com

PROUD TO PROTECT PEOPLE ALL AROUND THE WORLD



POLICE FORCES
FIRE & RESCUE TEAMS
BLOOD BIKERS
AMBULANCE CREWS
DRIVING SCHOOL

...





REGISTER YOUR AIRBAG AND BENEFIT FROM OUR 4 YEARS WARRANTY

All Helite airbags are CE certified and come with a 2 year warranty. If you register your airbag on our website **my.helite.com** you can extend the limited 2 years warranty to 4 years warranty.

Where can you find Helite airbags?

It's easy! Visit our website and find all our resellers around the world on our store locator.



Made in France

Design, development, manufacturing & tests of the airbag systems are conducted by HELITE in France.

HELITE Norge
Johansen Produkter Elise Sverdrups vei 1 3610 Kongsberg
tlf 90 63 21 91 - 92 22 01 69 Email: post@helite.no
www.helite.no

For Hip'safe: www.hip-safe.no

www.helite.com

Follow us on



HELITE Headquarter - 1 rue de la Petite Fin / 21121 Fontaine-Lès-Dijon / FRANCE
Tel.: +33 (0)3 80 35 48 26 / E-mail: helite@helite.com